



# ***Roller Chain & Sprockets***



**Marsh Buggy Chain**

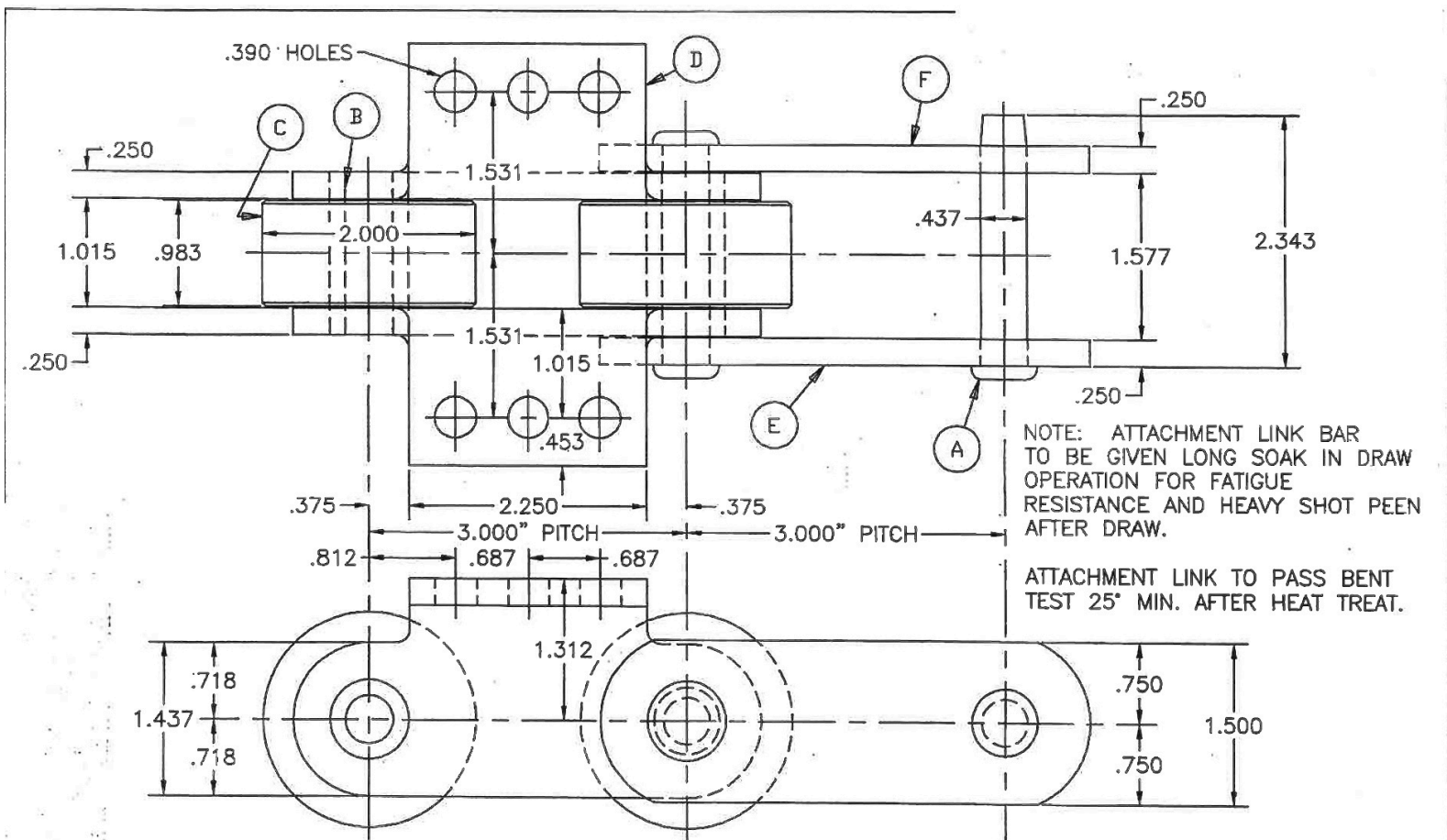
**USARollerChain.com**

<https://www.usarollerchain.com/marsh-buggy-chain-s/6131.htm>

# Marsh Buggy Chain | Marsh Buggy Track Chain

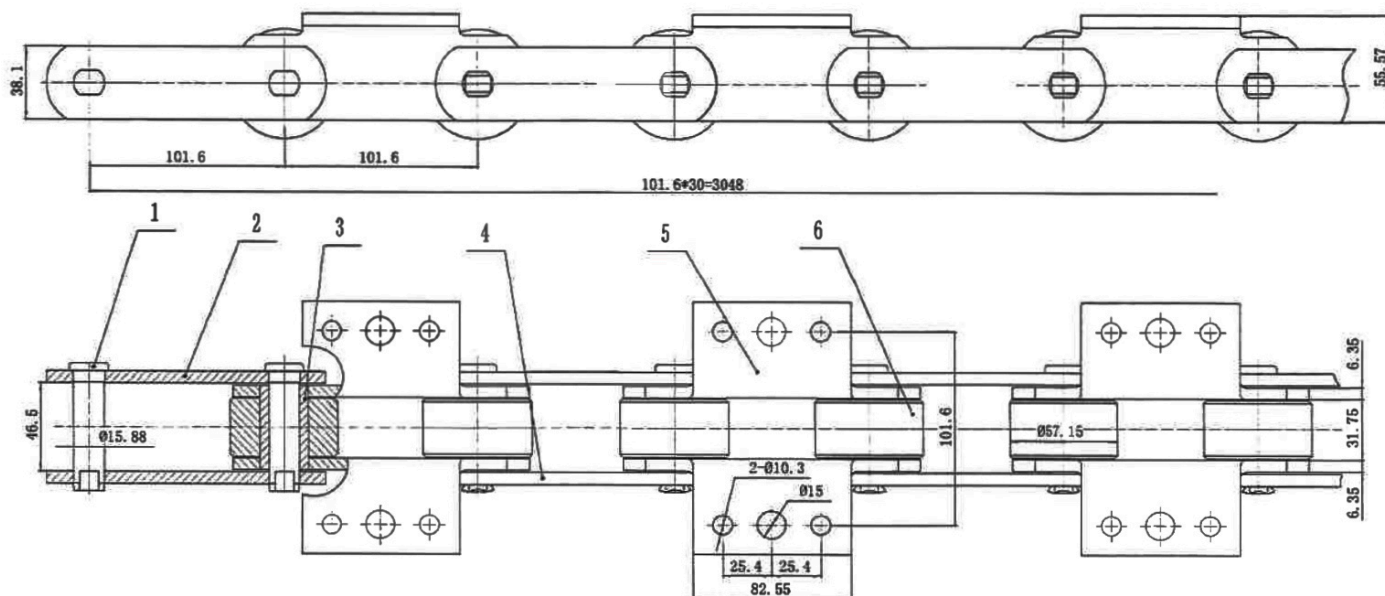
Marsh buggy chain, also commonly known as a swamp buggy chain or marsh buggy track chain is utilized on equipment ranging from marsh buggy excavators, cargo carriers, and personal amphibious vehicles. The effective track design of the track makes it possible for the buggy to propel its self through water and some of the harshest landscapes in the world. In the marsh, we realize the last thing anyone wants is a track chain breakage or failure because of the often remote applications these amphibious vessels are placed in. Because of this, at USA Roller Chain we partnered with some of the best chain manufactures in the business and along with industry experience have managed to supply a heavy-duty and high-strength marsh buggy chain that is up for the task! We supply track chains as well as the replacement roller and drive chains for marsh buggy equipment.

### 3" Marsh Buggy Chain



### 4" Marsh Buggy Chain

INDEX	DATE	REVISE RECORD	SIGN



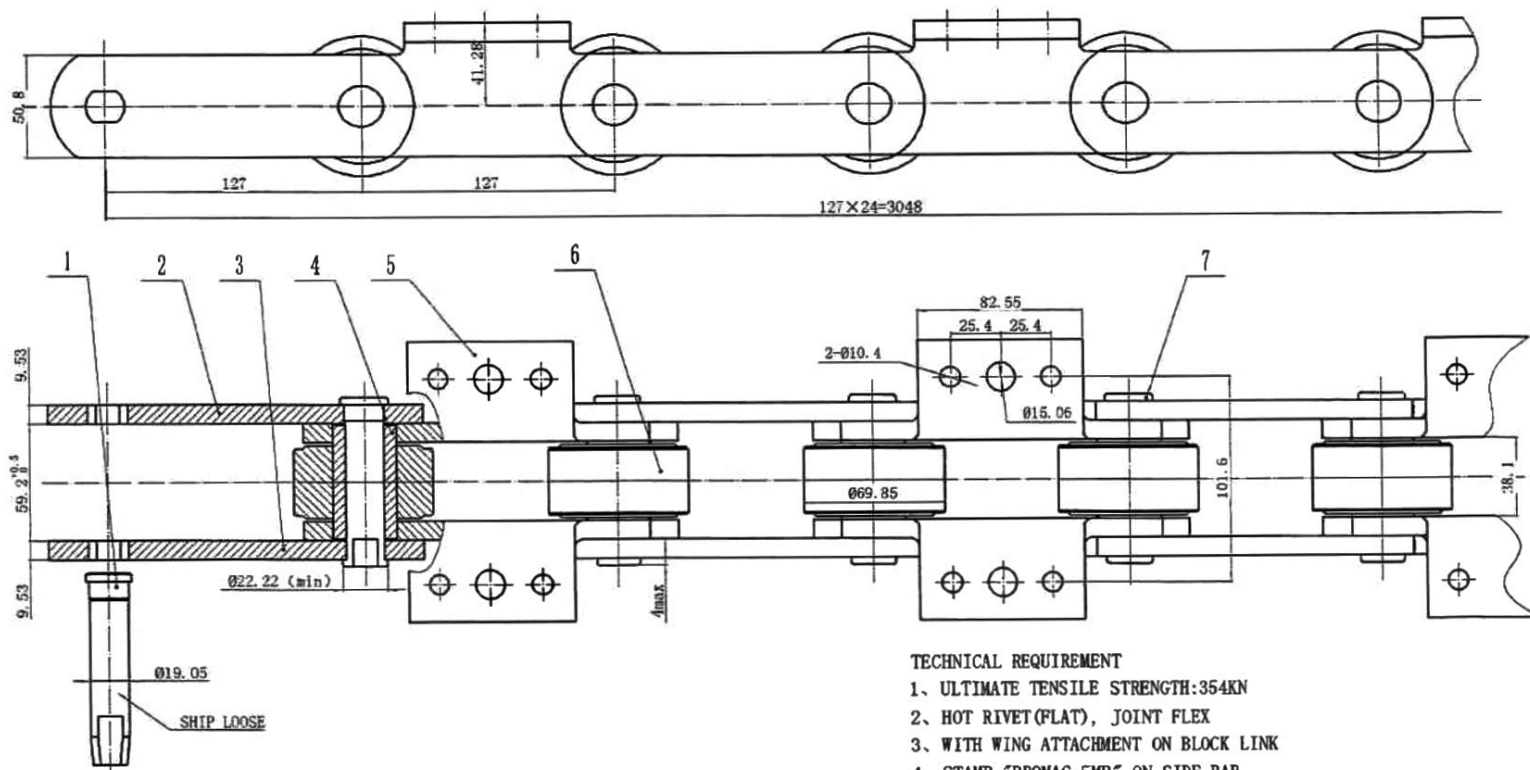
### TECHNICAL REQUIREMENT

- 1、ULTIMATE TENSILE STRENGTH:22000KGF
- 2、PUSH OUT FORCE: PIN HEAD SIDE 2000KGF, PIN TAIL SIDE 1300 KGF, BUSHING 800KGF
- 3、WITH K-3 ON BLOCK LINK
- 4、WINGS IN THE SAME LEVEL, MAX ERROR 0.5
- 5、QUADRILATERAL RIVET
- 6、STAMP SIDEBAR "PROMAC 4MB"
- 7、CLEAN AND OIL THE CHAIN BEFORE PACKING

6	GZ571502	ROLLER	30	40Cr	0.495	14.85											P=101.6 MARSH BUGGY CHAIN	PROMAC
5	LBC06310101	WING ATT.	30	40Cr	0.497	14.01												
4	LBB06310108	FH OUTSIDE BAR	15	40Cr	0.237	3.555												
3	T725400J	BUSHING	30	20CrMo	0.104	3.12												
2	LBB06310107	RH OUTSIDE BAR	15	40Cr	0.235	3.525												
1	XC158802A	PIN	30	35CrMo	0.104	3.12												
NO.	PART NO.	PART	QTY	MATL	SINGLE WEIGHT	ALL WEIGHT	REMARK	Design	Standard	Drawer	Technics	Audit	Authorize	IN ALL	NO.			27154

### 5" Marsh Buggy Chain

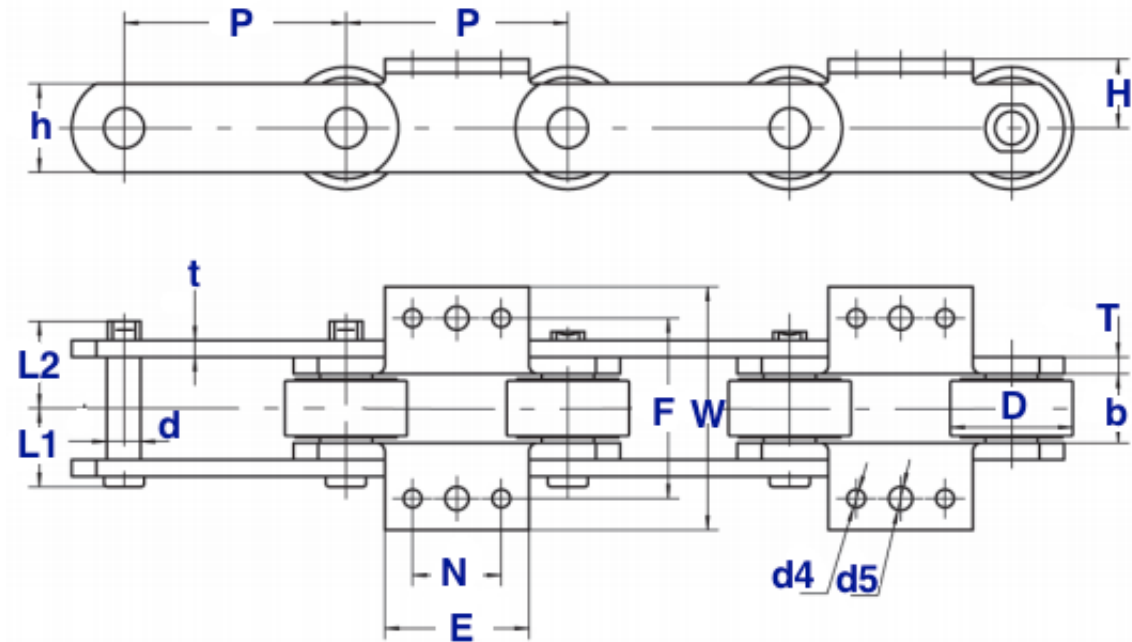
INDEX	DATE	REVISE RECORD	SIGN
	8/13/2019	HOT RIVET 1016 CAIN	Fbg



### TECHNICAL REQUIREMENT

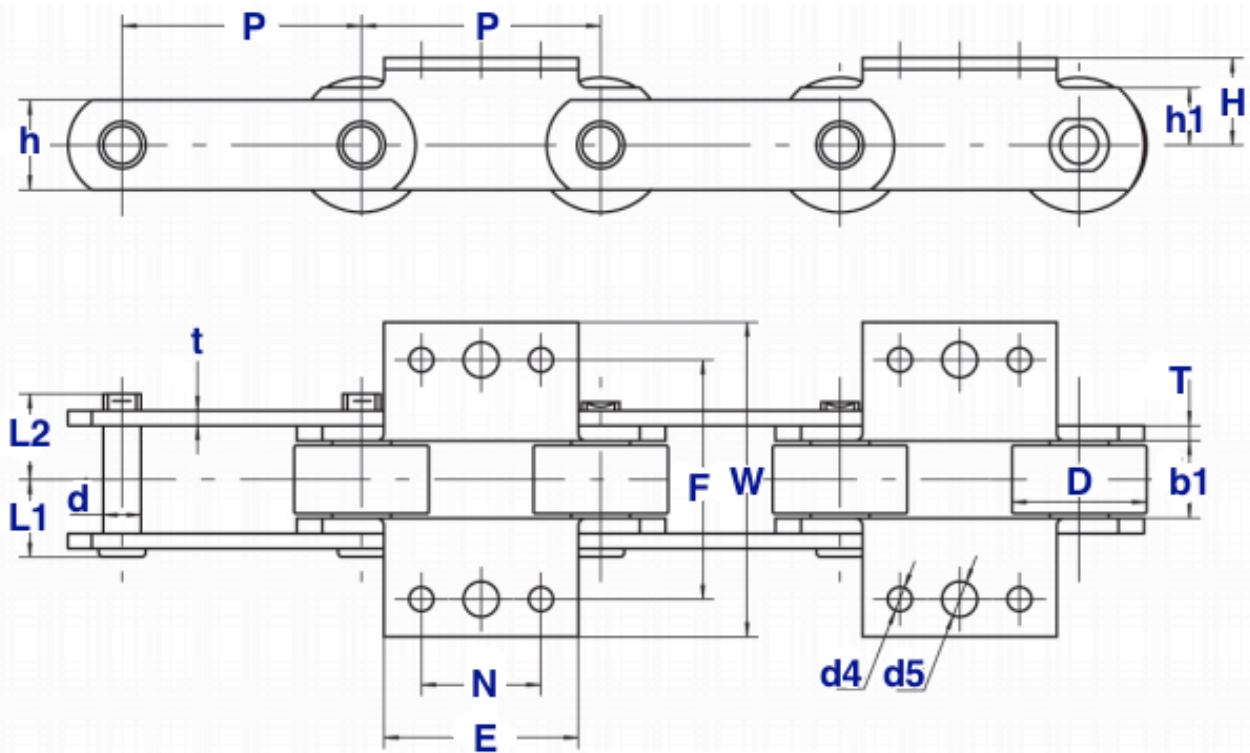
1. ULTIMATE TENSILE STRENGTH:354KN
2. HOT RIVET(FLAT), JOINT FLEX
3. WITH WING ATTACHMENT ON BLOCK LINK
4. STAMP "PROMAC-5MB" ON SIDE BAR
5. CLEAN AND OIL THE CHAIN

[illegible]



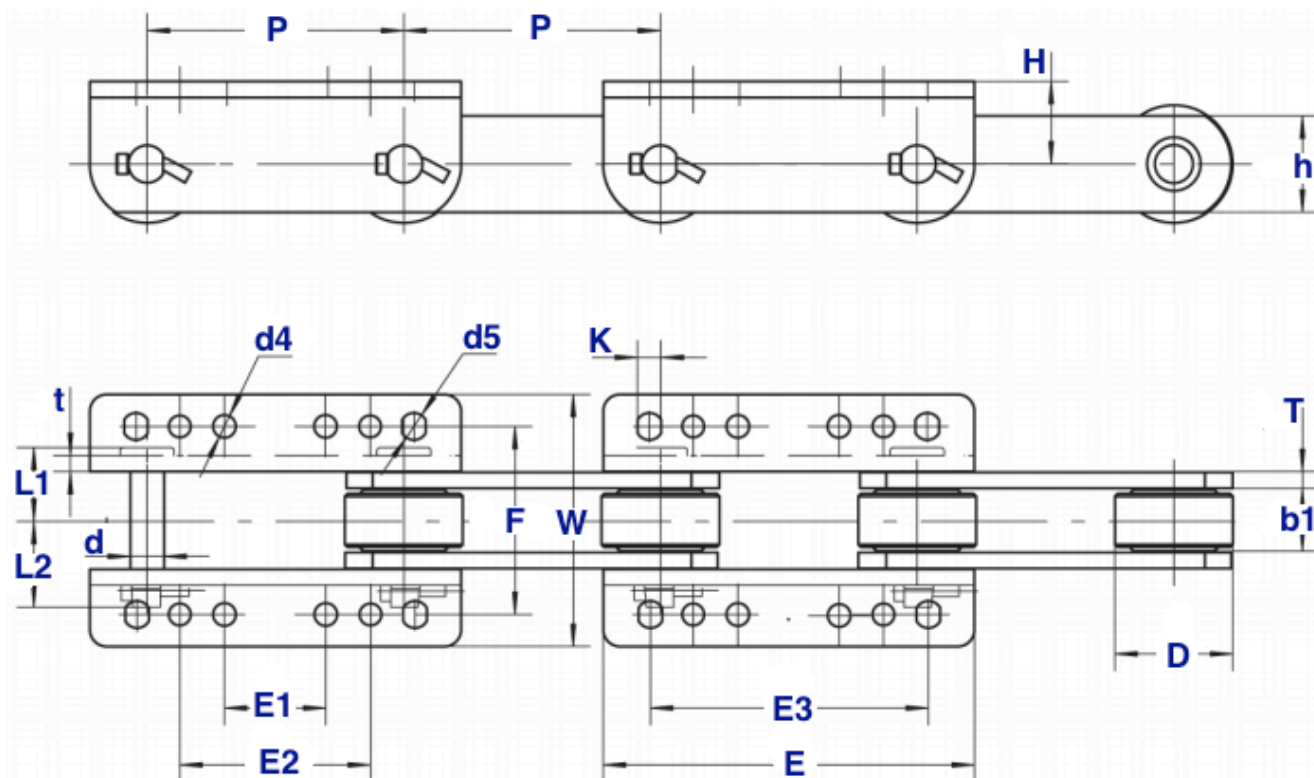
Dimensions in Millimeters

Size	(F)	(W)	(N)	(E)	(d4)	(d5)	(H)	(P)	(b1)	(D)	(d)	(L1)	(L2)	(h)	(t/T)	Weight (kG/ M)
76.2-K3	77.6	101.6	35	57.5	9.8	9.8	33.2	76.2	25.5	50.8	11.1	28.9	32.9	38.1	6.4	12.4
127-K3	103.4	139.4	50.8	82.6	10.3	13.5	39.6	127	38.4	69.85	19	44.5	52	50.8	9.6	21.6



Dimensions in Millimeters

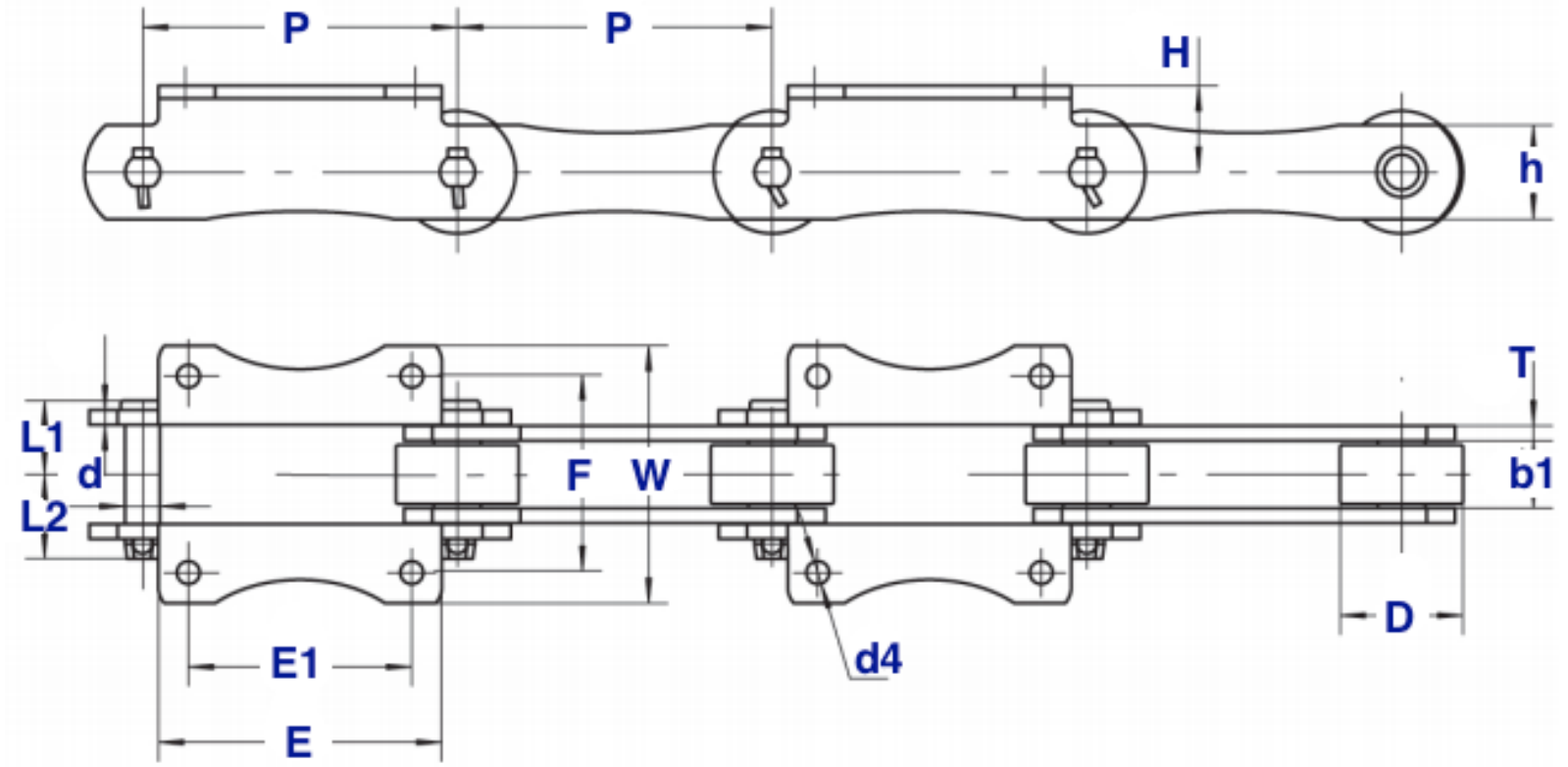
Size	(F)	(W)	(N)	(E)	(d4)	(d5)	(H)	(P)	(b1)	(D)	(d)	(L1)	(L2)	(h)	(h1)	(t/T)	Weight (kG/ M)
101.6-K3	101.6	133.6	50.8	82.6	10.3	15	36	101.6	31.8	57.15	15.88	33.8	39	38.1	44.4	6.4	14.2



Dimensions in Millimeters

Size	(F)	(W)	(d4)	(d5)	(K)	(E1)	(E2)	(E3)	(E)	(H)	(P)	(b1)	(D)	(d)	(L1)	(L2)	(h)	(t/T)	Weight (kG/ M)
HZ09060-K6	110	150	13.5	16	14	60	113	165	221	49	152.4	37.7	69.85	18.9	43.4	51.8	50.8	9.5	22.2





Dimensions in Millimeters

Size	(F)	(W)	(d4)	(E1)	(E)	(H)	(P)	(b1)	(D)	(d)	(L1)	(L2)	(h)	(t/T)	Weight (kG/ M)
25200-K2	120	158	13	146	180	55	200	40.8	78	22.23	46.5	53.5	60	9.5	22.3