



Model Number:	PC3-CI-TF-213T-4-B-B-7.5
MFG PN:	874
List Price:	

All data shown at HIGH voltage setting

Format: STD 3 Phase

Electrical Data				General Data			
Rated Motor Output Power	7.5	HP		Frame Size	213T		
Rated Motor Speed	1750	r/min 60Hz		Enclosure	TEFC		
	1441	r/min 50Hz		Mounting	Rigid		
Rated Motor Voltage (3 Phase)	230	V/60Hz		NEMA Design	A		
	-	V/50Hz		IP Rating	55		
Rated Motor Current	18.23	A (In) @ 60Hz		Insulation Class	F		
	7.1/3.6	A (In) @ 50Hz		Tropicalization	1		
FL Current @ 208V	None	A (In) @ 60Hz		Duty	Cont. / S1		
Service Factor	1.25	@ 60Hz		Cable Entry	1-NPT 1"		
	1.25	@ 50Hz		Feet Removable	1		
KVA Code	L	60Hz		Double Drilled	0		
	-	50Hz		Frame Material	Cast Iron		
Nominal Efficiency	91.7	% @ 60Hz		Shaft Material	None		
	92.5	% @ 50Hz		Coating	RAL	7024	
Nominal Power Factor	0.82	cos $\phi$ @ 60Hz					
Full Load Torque Ft-Lb	S			Mechanical Data			
Load Data	Trq Ft-Lb	Trq %FL	Current Amps	Bearing DE Side	6308ZZ		
Locked Rotor				Bearing NDE Side	6308ZZ		
Breakdown	63.15635571	281.0	-	Comp Ring (wavey washer)	NDE		
Pull Up	36.41042571	162.0	-	Weight	158.76	Lbs	
Load Data	RPM	Eff %	Current Amps	Moment of Inertia	None	kg.m3	
125% of FL	1775.9	95.15	3.55	Site Conditions			
75% of FL	1786.2	93.2	3.24	Temp Rise @ Full Load °C	B	@ 60Hz	
50% of FL	1790.9	94.91	3.12	Ambient Temperature °C	40		
No Load	1199.0	0	1.95	Altitude Above Sea Level (M)	1000		
Brake Torque (N-M)	100.0		Loaded Torque Curves		None		
Brake Coil Voltage	None		P1 = Output Power (KW), S = Slip (% of Sync RPM), $\eta$ = Efficiency (%), cos $\phi$ = Power Factor				

<b>CT VFD Range</b>	
Haz Loc Rating	
Options:	
<b>UL File Number</b>	
<b>CSA File Number</b>	
<b>DOE File Number</b>	
<b>CE APPROVAL</b>	
<b>Wiring Diagram</b>	<b>NEMA-3-3-Y</b>

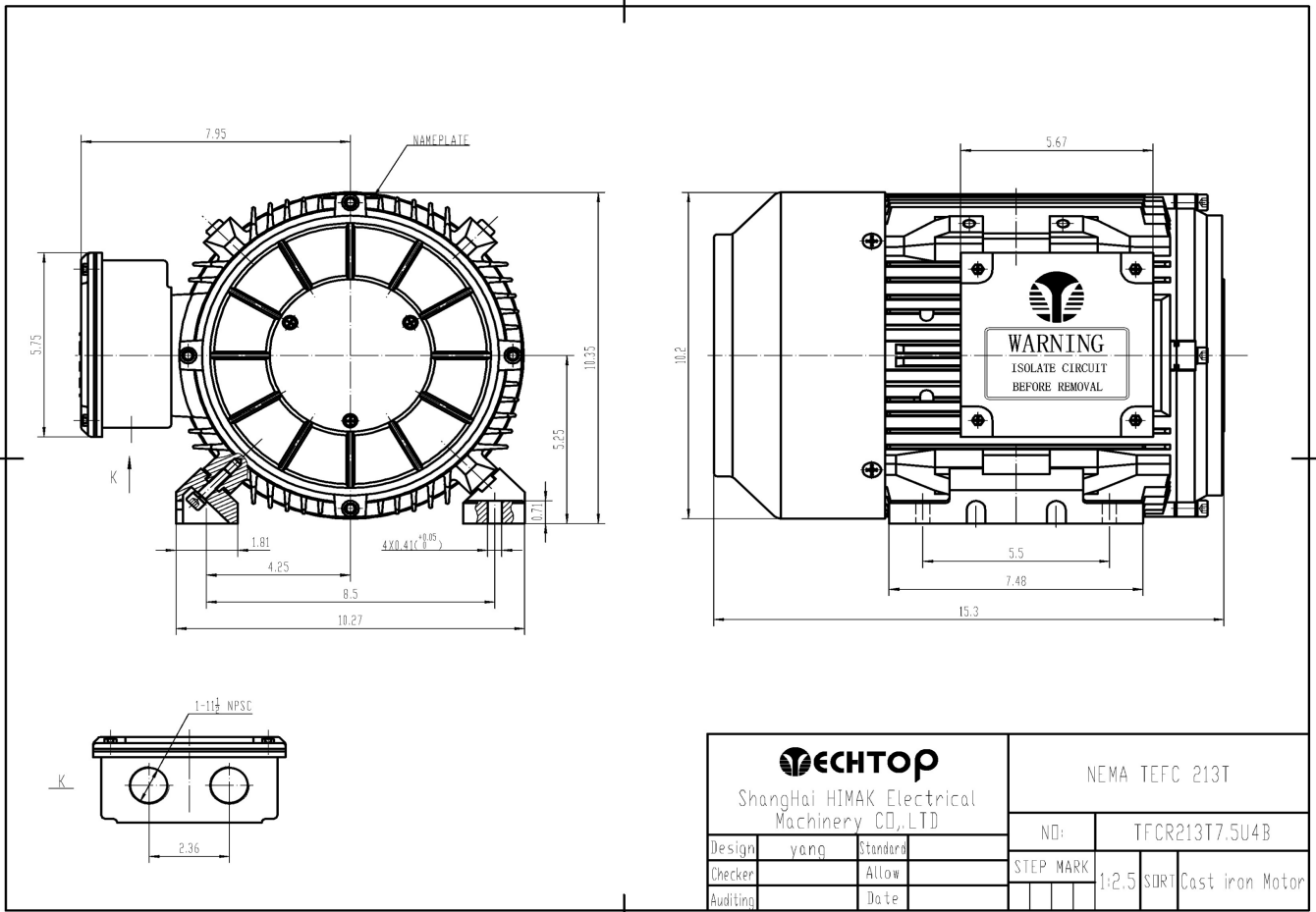
Techtop Industries -2815 Colonnades Court - Peachtree Corners, GA 30071 - Phone: (678) 436-5540



<b>Model Number:</b>	PC3-CI-TF-213T-4-B-B-7.5
<b>MFG PN:</b>	
<b>List Price:</b>	874

Dimensional Drawing (For Reference Only)

PC3-CI-TF-213T-2D



<b>TECHTOP</b> ShangHai HIMAK Electrical Machinery CO.,LTD			NEMA TEFC 213T		
Design	yang	Standard	NO:	TFGR213T7.5U4B	
Checker		Allow	STEP MARK	1:2.5	SORT Cast iron Motor
Auditing		Date			

Components			
Item	Model	Description	List Price
C-Face Kit			
D-Flange Kit			
DE Endplate Kit			
NDE Endplate Kit			
Junction Box			
Cooling Fan Cover			
Cooling Fan			
Replacement Feet			
DE Bearing Retainer Kit			
NDE Bearing Retainer Kit			

