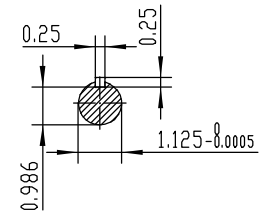
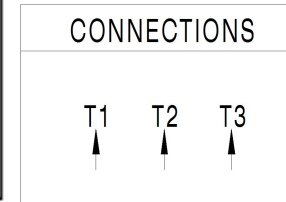


**NOTES:**

1. All Cast Iron Construction
2. Design B
3. IP55 Labyrinth seals on DE and ODE
4. H Class Insulation System
5. Max Winding Temperature rise 80°C
6. Max bearing temperature rise 45°C for 4 pole and 50°C for 2 pole motors when direct coupled.
7. Regreasable bearings
8. External Grounding provisions
9. Maximum foot flatness deviation .127 mm
10. Conductive Polymer Cooling Fan
11. Diagonally Split Conduit Box rotatable in 90° Increments
12. Lead seals in conduit box
13. Maximum no load sound power 85 dBA(2 pole),  
Maximum no load sound power 70 dBA(4 pole),  
Maximum no load sound power 64 dBA(6 pole).
14. No Load Motor Vibration not to exceed  
a.Radial 60HZ - 2.03mm/s (2,4 pole) and 1.52mm/s (6 pole)  
b.Axial 60HZ - 1.52mm/s
15. 300 series Stainless Steel hardware
16. Epoxy Coating meeting ASTM B117-97 for 96 h
17. All internal surfaces coated with anti-corrosion coating.
18. Internal Shaft Grounding brush installed on drive end.
19. No Load test report included with motor

<b>TECHTOP</b>		<b>IEEE 841</b>		<b>SEVERE DUTY</b>	
				<b>ELECTRIC MOTOR</b>	
MODEL SD3-182T-2-8R-E-3		TECHTOP.COM			
NEMA 60 Hz 50 Hz		MFG PN T 182T3U2B			
HP 3 3		SER # 1603102008			
RPM 3510 2865		DATE 0688002			
VOLT(3Ø) 460 380		DESIGN B			
FLA 3.6 4.3		FRAME 182T			
SF 1.25 1		ENCL TEFC			
KVA CODE K F		IP 55			
NOM.EFF 0.865		DUTY Cont.			
INS CL H		AMB 40 °C			
WEIGHT 91.6 lbs		MADE IN CHINA			
BEARING SIZE DE 8306-Z ODE 8306-Z		VFD 15:1 CT-1.0 SF			



 ShangHai HIMAK Electrical Machinery CO., LTD		NEMA TEFC 182T-3HP-2P	
		IEEE-841 UNITS:INCH	
Design		NO:	CY253.A20.001
Checker		STEP MARK	1:3.5 SORT Cast iron Motor
Auditing		Standard	Date