

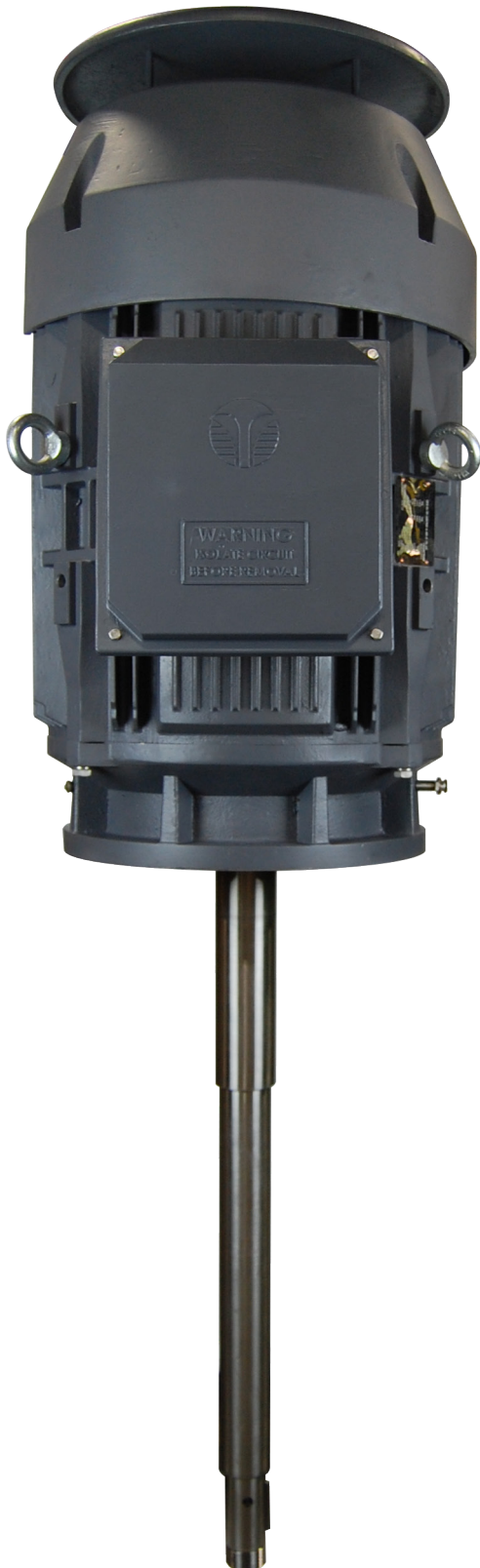
HP: 3-75

Volt: 230/460V & 575V



Pole: 4,6

RPM: 1800, 1200



## STANDARD FEATURES

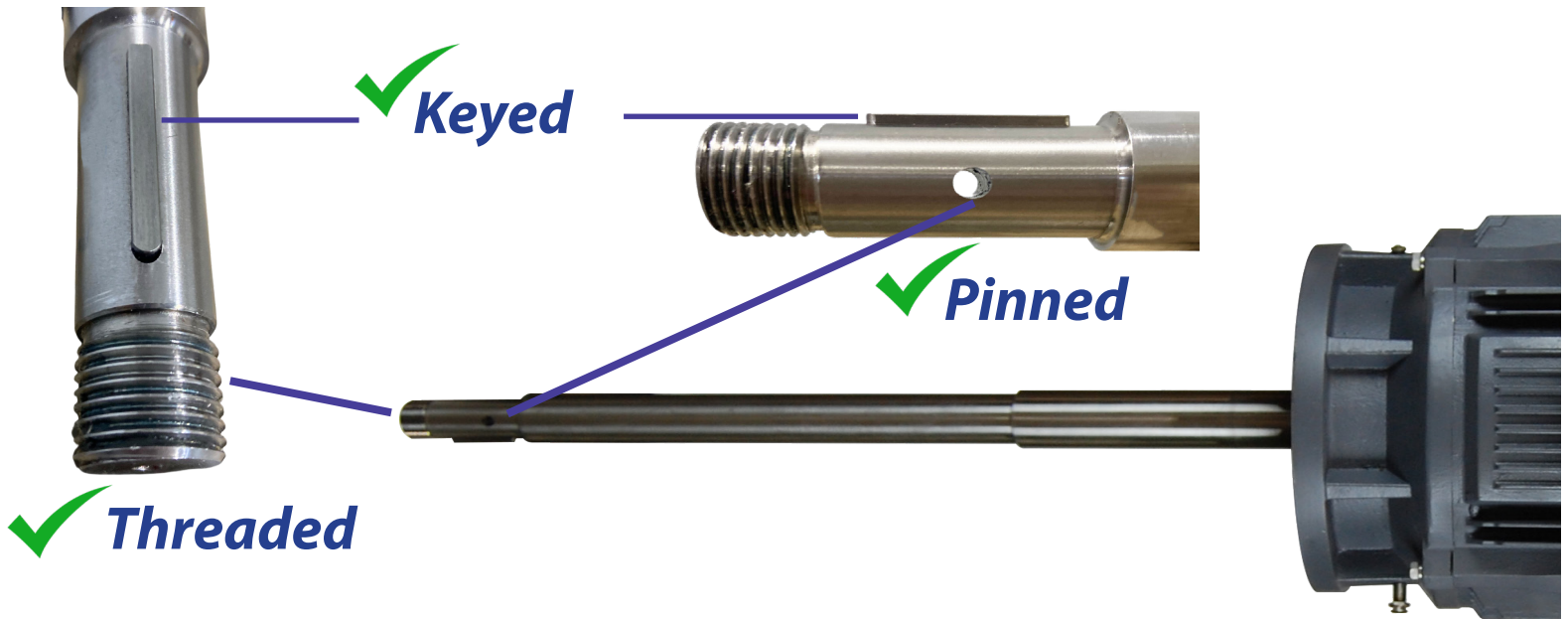
- NEMA Premium Energy Efficiency Design
- Power Ratings/ RPM
  - 3 - 15 HP (1800 RPM)
  - 20 - 75 HP (1200 RPM)
- Totally Enclosed Fan Cooled (TEFC)
- 60Hz (50 Hz Capable)
- Rated Severe Chemical Duty
- Ambient Temperature 40°C
- Installation up to 3300ft
- IP 55
- Conduit Box completely potted with epoxy filler
- Inverter Duty 15:1 CT-1.0 SF
- Designed to Class B temperature rise
- Vacuum Impregnated Stator with tropicalization coating
- Dynamically balanced and vibration tested
- Heavy Duty Cast Iron motor construction
- Heavy Duty L10 100,000 hr. life bearings
- Double-row bearings on Drive-end
- 17- 4 PH Stainless Steel 1-Piece Shaft
- Shaft threaded and keyed on drive-end for simple installation or removal of prop
- Stainless Steel hardware & Nameplate
- Class 1, Division II, Groups A, B, C and D compliant
- Base Corrosion protection Primer coat
- 2-Part Epoxy Top Coat RAL7024 - Graphite Gray
- **Space Heaters**
- **Class H 180°C Insulation System**
- **36 Months from date of purchase**

Continued on back

HP	Sync Speed	Model No.	List Price
3	1800	AE3-182LP-4-D-3	\$2,940
5	1800	AE3-184LP-4-D-5	\$3,210
7.5	1800	AE3-213LP-4-D-7.5	\$4,340
10	1800	AE3-215LP-4-D-10	\$5,100
15	1800	AE3-254LP-4-D-15	\$5,870
20	1200	AE3-286LP-6-D-20	\$8,430
25	1200	AE3-324LP-6-D-25	\$10,548
	1200	AE3-364LPZ-6-D-25	\$12,783
30	1200	AE3-326LP-6-D-30	\$11,614
	1200	AE3-364LPZ-6-D-30	\$13,288
40	1200	AE3-364LP-6-E-40	\$14,625
50	1200	AE3-365LP-6-E-50	\$15,382
	1200	AE3-365LPZ-6-E-50	\$15,831
60	1200	AE3-404LP-6-E-60	\$21,964
75	1200	AE3-405LP-6-E-75	\$23,676



MULTIPLIER CODE: AE



*Techtop Aerator Motors can be used whether you're in need of a keyed and threaded shaft, or a pinned shaft.*

Techtop offers replacement motors for all previously manufactured aerators. The motors are 100% interchangeable with the following aerator manufactures, but with superior operating features.

We replace motors that are currently used on the following OEM units:

Aqua-Aerobics  
Evoqua / **Xylem**  
Aerator Solutions