

PRODUCT INFORMATION PACKET



Model No: A6C17XB21J

Catalog No: 110934.00

3/4HP..1725RPM.56H.EPFC./V.1PH.60HZ.CONT.AUTOMATIC.40C.1.0SF.RIGID.EXPLOSION-
PROOF.A6C17XB21J

Explosion Proof



Regal and Leeson are trademarks of Regal Beloit Corporation or one of its affiliated companies.

©2018 Regal Beloit Corporation, All Rights Reserved. MC017097E



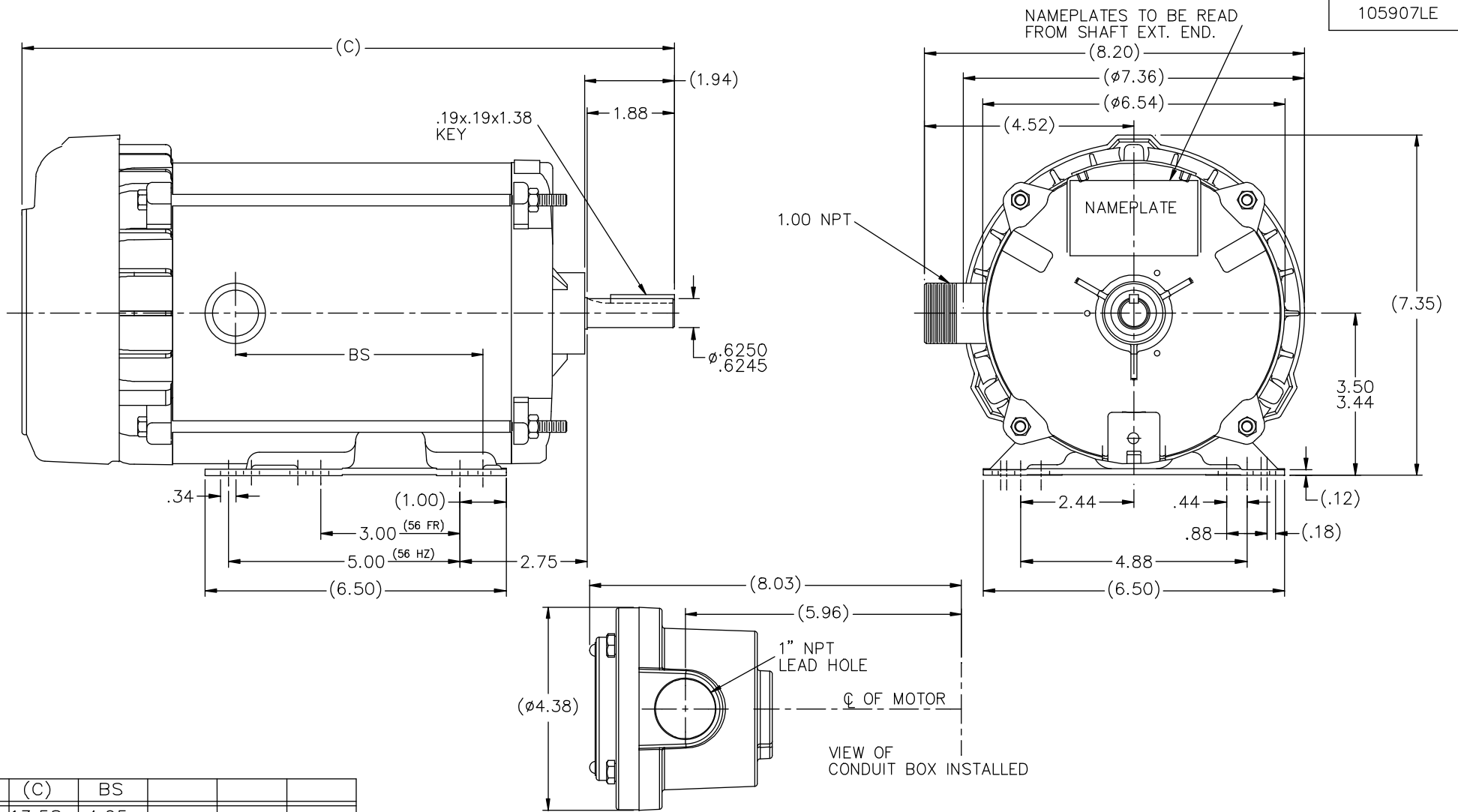


Nameplate Specifications

Output HP	0.75 Hp	Output KW	0.56 kW
Frequency	60 Hz	Voltage	115/208-230 V
Current	11.0/5.4-5.5 A	Speed	1725 rpm
Service Factor	1	Phase	1
Efficiency	70 %	Duty	Continuous
Insulation Class	B	Design Code	N
KVA Code	L	Frame	56H
Enclosure	Explosion Proof Fan cooled	Overload Protector	Automatic
Ambient Temperature	40 °C	Drive End Bearing Size	6203
Opp Drive End Bearing Size	6203	UL	Recognized
CSA	Y	CE	N
IP Code	54		

Technical Specifications

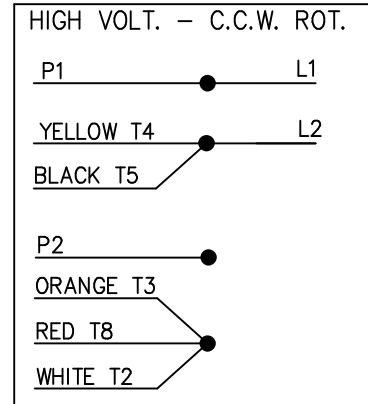
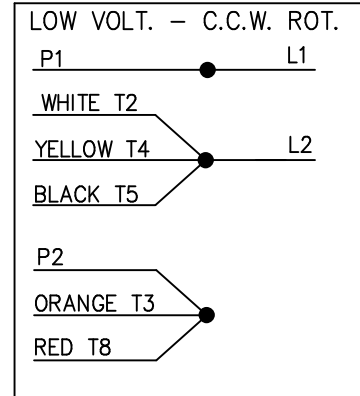
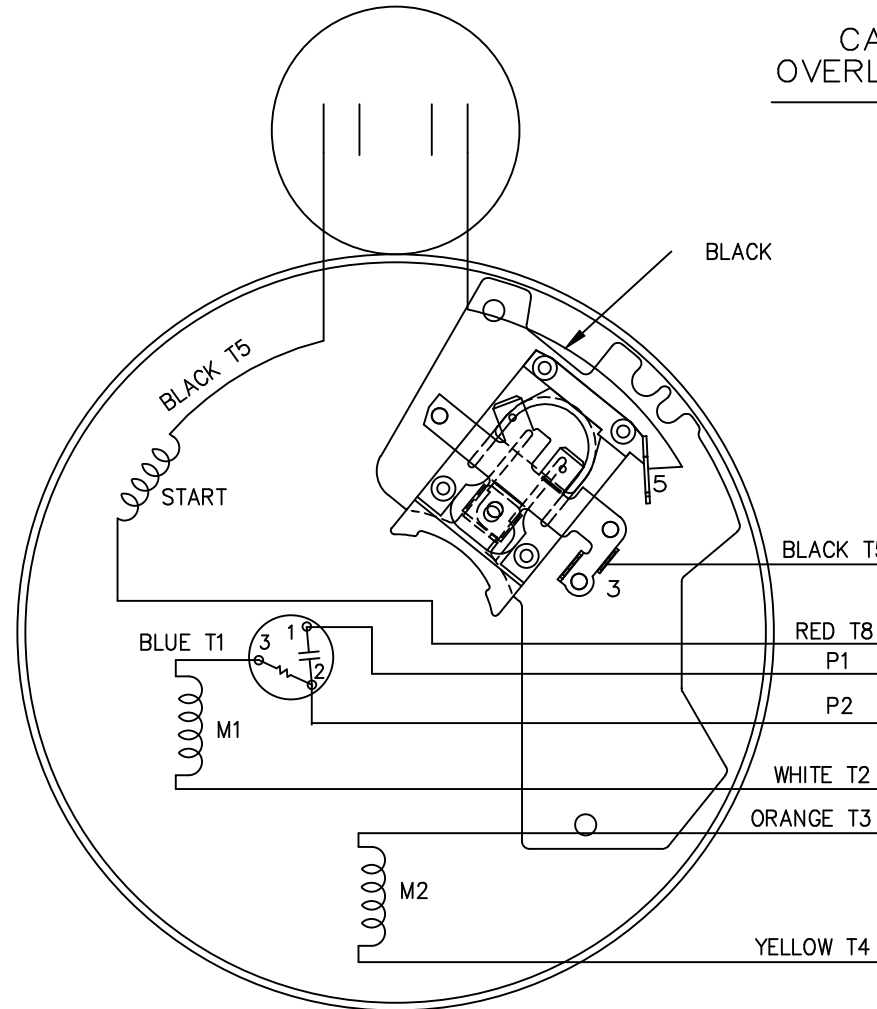
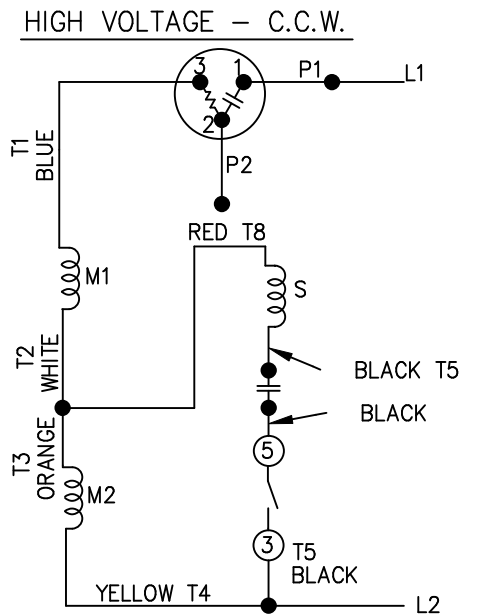
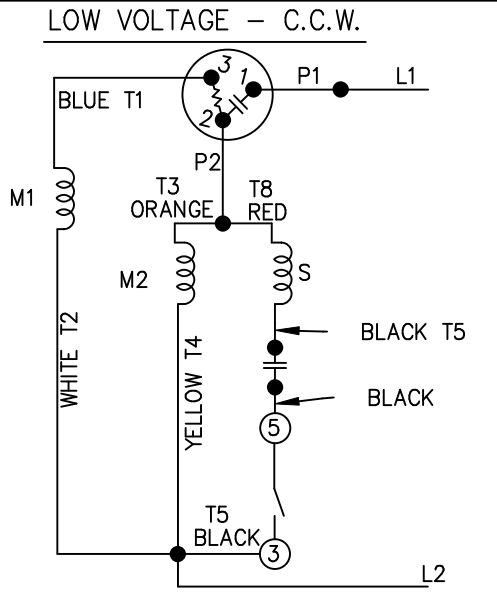
Electrical Type	Capacitor Start Induction Run	Starting Method	Across The Line
Poles	4	Rotation	Selective Counterclockwise
Mounting	Rigid base	Motor Orientation	HORIZONTAL
Drive End Bearing	BALL	Opp Drive End Bearing	BALL
Frame Material	Rolled Steel	Shaft Type	NEMA 56
Overall Length	14.08 in	Frame Length	7.31 in
Shaft Diameter	0.625 in	Shaft Extension	1.88 in
Assembly/Box Mounting	F1 ONLY		
Outline Drawing	B-105907LE-731	Connection Diagram	A-102005-84-LE




DASH	(C)	BS			
681	13.58	4.65			
731	14.08	5.15	SHOWN		
781	14.58	5.65			
831	15.08	6.15			
881	15.58	6.65			
931	16.08	7.15			
981	16.58	7.65			

		TOLERANCES UNLESS SPECIFIED		LEESON ELECTRIC MOTORS GEARMOTORS AND DRIVES		DRAWN VL 08-27-2007
		DEC.	INCHES			CHK VL 12-07-07
		.X	±.1			APPD VL 08-27-2007
		.XX	±.03	TITLE OUTLINE		SCALE 1=2
2	COND. BOX INSTALLED VIEW UPDATED PER ECR-0044571	UD	10/16/13	ST	.XXX ±.005	REF
1	REVISED BASE & BRACKET 08-1256	RJW	03-25-2008	ML	.XXXX ±.0005	FMF
NO.	REVISION	BY & DATE	CHK	ANG	±7'30"	PREV
THIS DRAWING IN DESIGN AND DETAIL IS OUR PROPERTY AND MUST NOT BE USED EXCEPT IN CONNECTION WITH OUR WORK ALL RIGHTS OF DESIGN AND INVENTION ARE RESERVED THIS IS AN ELECTRONICALLY GENERATED DOCUMENT - DO NOT SCALE THIS PRINT				RFP	CAD FILE 105907LE	SIZE B
				DIST WP		DRAWING NO. 105907LE
						PAGE OF 2
						REV. 2

DUAL VOLTAGE
CAPACITOR START
OVERLOAD SELECT ROT.



FOR C.W. ROTATION
EITHER VOLTAGE
INTERCHANGE RED(T8)
WITH BLACK(T5) LEAD

				TOLERANCES UNLESS SPECIFIED		 ELECTRIC MOTORS GEARMOTORS AND DRIVES	DRAWN VL 08-08-2007
				DEC.	INCHES		CHK
				.X	±.1		APPD
				.XX	±.02		SCALE 5=8
				.XXX	±.005		REF
1	REV'D CONNECTION TO MATCH ROTATION ISAAC 07-2021	JJB 09/05/2007	ML	.XXXX	±.0005	MAT'L.	FMF 56M1072
NO.	REVISION	BY & DATE	CHK	ANG	±7'30"	FINISH	PREV
THIS DRAWING IN DESIGN AND DETAIL IS OUR PROPERTY AND MUST NOT BE USED EXCEPT IN CONNECTION WITH OUR WORK ALL RIGHTS OF DESIGN AND INVENTION ARE RESERVED THIS IS AN ELECTRONICALLY GENERATED DOCUMENT - DO NOT SCALE THIS PRINT				RFP	CAD FILE 102005_84_LE		SIZE A
				DIST WP			DRAWING NO. 102005-84-LE
						PAGE OF	REV. 1

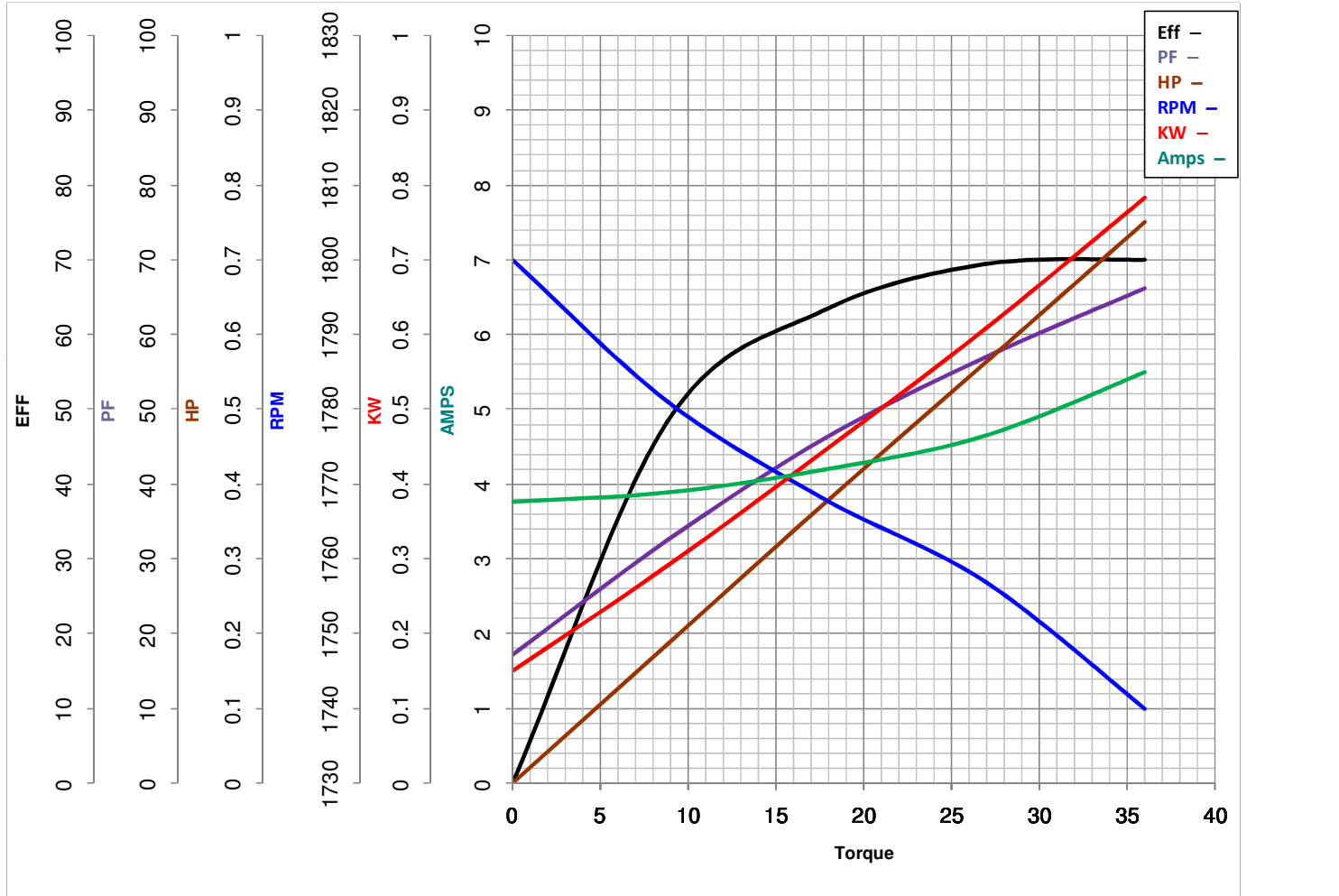


LEESON ELECTRIC CORPORATION
 TYPICAL PERFORMANCE CURVE for AC MOTOR

Model No 110934.00

Catalog No 110934.00

Curve at 230 Volts HP 0.76 PHASE 1
60 HZ
0.75 HP VOLTS 115/208-230
 HZ 60 RPM 1725



Torque in Oz.Ft

FL TORQUE 36 Oz.Ft
 BD TORQUE 97.9 Oz.Ft
 LR TORQUE 133 Oz.Ft

FL AMPS 11/5.4-5.5
 PU TORQUE 72.6 Oz.Ft
 LR AMPS 30.5

WINDING ZC4147-3

Date 3/23/2018